

Discover the New Search Enhancements of Oxygen Feedback 4.0

Alin Balasa

alin_balasa@oxygenxml.com

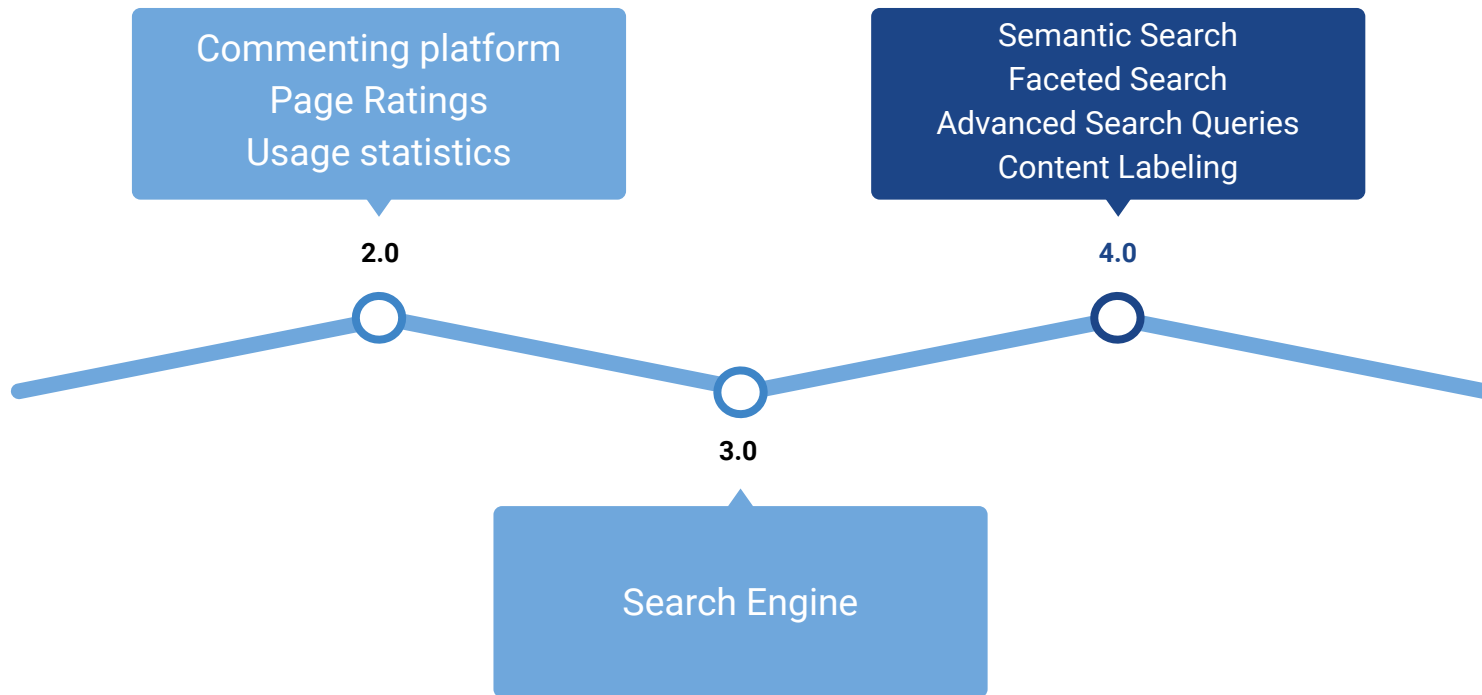
© 2023 Syncro Soft SRL. All rights reserved.



Agenda

- 1 Integrate Oxygen Feedback into WebHelp Responsive output
- 2 Enable Content Indexing and Search
- 3 Filter the search results
- 4 Apply labels to DITA topics
- 5 Use advanced search queries
- 6 Enable semantic search

Oxygen Feedback Evolution



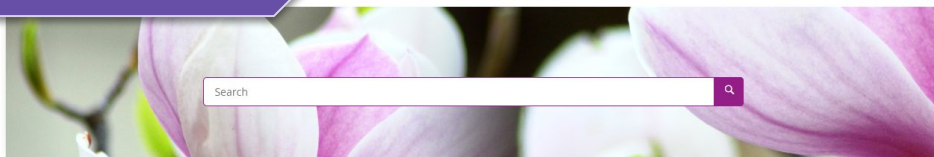
WebHelp Output and Search Features Availability

	Content Indexing	Keywords Search	Semantic Search	Faceted Search	Advanced Search Queries	Content Labeling
Non WebHelp Responsive HTML content	✗	✗	✗	✗	✗	✗
24.x Webhelp Responsive Output	✗	✗	✗	✗	✗	✗
25.x WebHelp Responsive Output	✓	✓	✗	✗	✗	✗
NEW 26.0 WebHelp Responsive Output	✓	✓	✓	✓	✓	✓

Integrate Oxygen Feedback

WebHelp Responsive

INTRODUCTION CARE AND PREPARATION FLOWERS BY SEASON GLOSSARY COPYRIGHT



Care and Preparation Pruning

Pruning

Pruning is the process of removing certain above-ground elements from a plant; in landscaping this process usually involves removal of diseased, non-productive, or otherwise unwanted portions from a plant. In nature, certain meteorological conditions such as wind, snow or seawater mist can conduct a when for natural pruning process. The purpose of anthropomorphic pruning is to shape the plant by controlling or directing plant growth, to maintain the health of the plant, or to increase the yield or quality of flowers and fruits.

In general the smaller the wound (smaller the branch that is cut) the less harm to the tree. It is therefore typically better to formative prune the tree when juvenile than try to cut off large branches on a mature tree.

```
<div xmlns="http://www.w3.org/1999/xhtml"
```

```
<script id="oxygen-feedback" type="text/javascript" src="https://feedback.oxygen-xml.com/feedback.js" ></script>
```

```
</div>
```

```
</div>
```

```
</div>
```

```
</div>
```

```
</div>
```

```
</div>
```

```
</div>
```

```
</div>
```

```
</div>
```

```
</div>
```

Oxygen Feedback embeddable HTML fragment

Oxygen Feedback comments component

1. Create Site Configuration

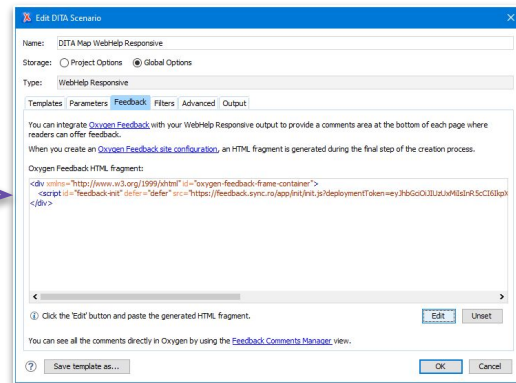
Acquire an **embeddable HTML installation fragment** by setting up your WebHelp Responsive deployment details in Oxygen Feedback.

2. Embed HTML Fragment

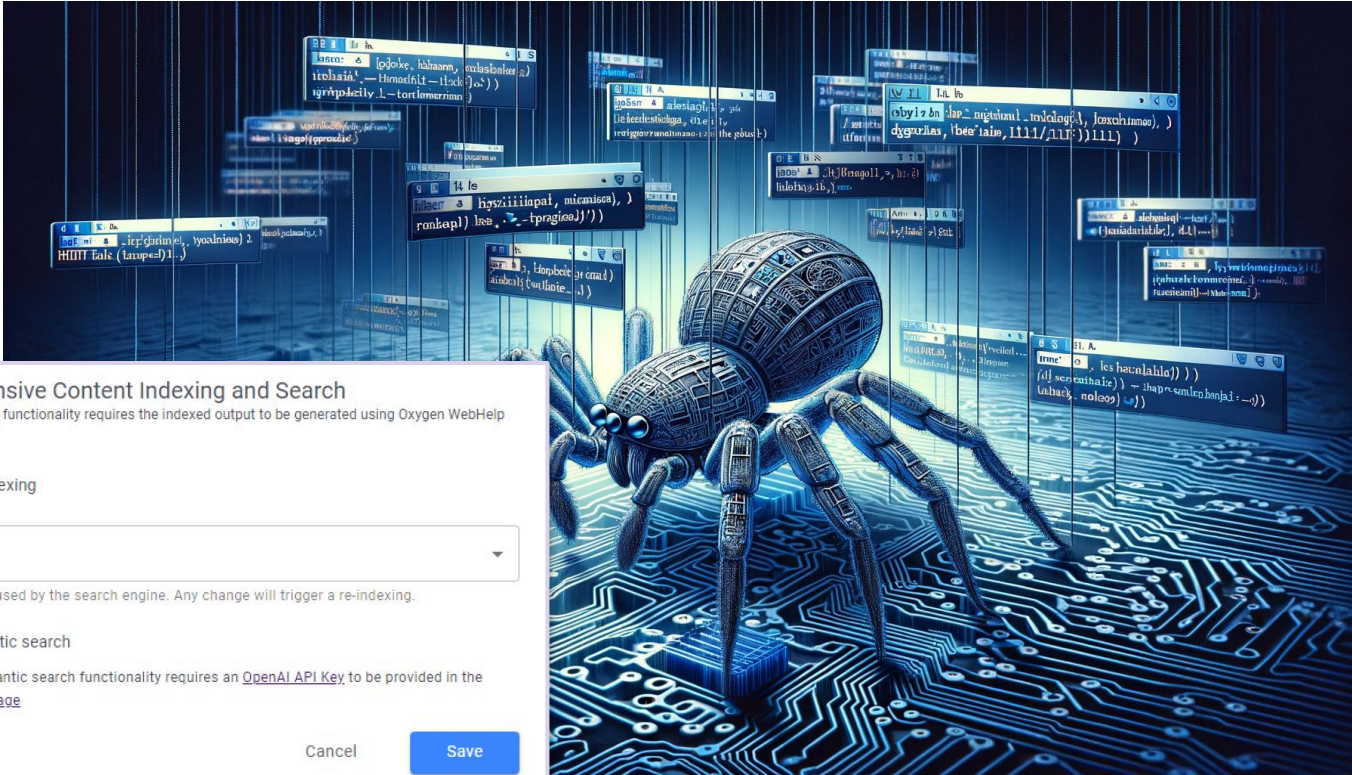
Configure the Oxygen Feedback HTML installation fragment into your WebHelp publishing process and republish your documentation.

3. Enjoy Oxygen Feedback

Use Oxygen Feedback as commenting platform and search engine in your WebHelp Responsive publication



Enable Content Indexing



WebHelp Responsive Content Indexing and Search

Note: The content indexing functionality requires the indexed output to be generated using Oxygen WebHelp version 25 or higher.

Enable content indexing

Language

English

The language to be used by the search engine. Any change will trigger a re-indexing.

Enable semantic search

Note: The semantic search functionality requires an [OpenAI API Key](#) to be provided in the [Organization Page](#)

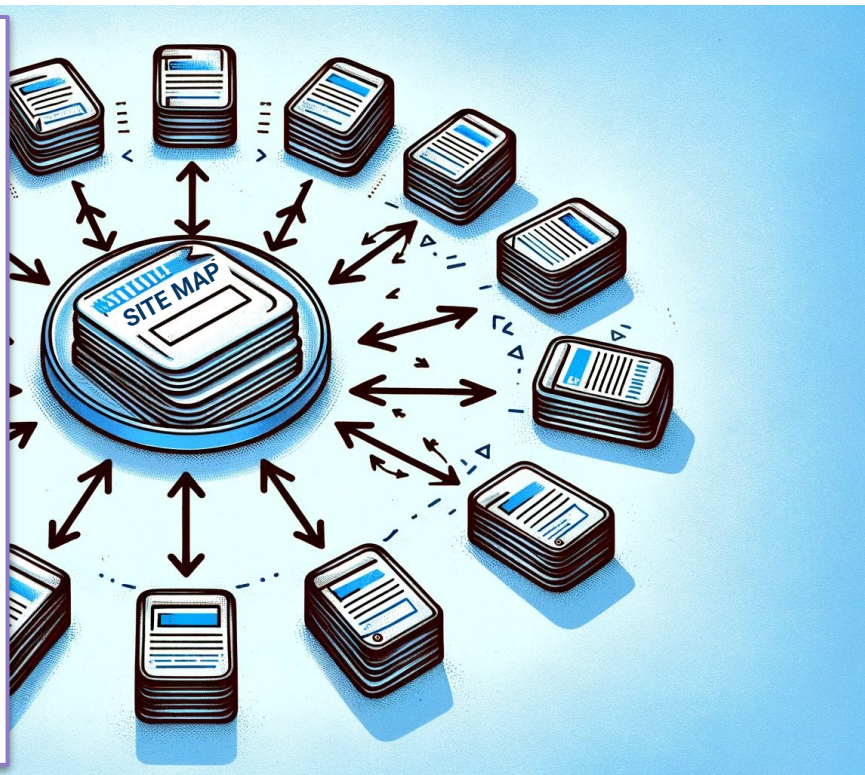
Cancel

Save

Content Discovery

```
<?xml version="1.0" encoding="UTF-8" ?>
<urlset xmlns="http://www.sitemaps.org/schemas/sitemap/0.9">
  <url>
    <loc>topics/introduction.html</loc>
    <lastmod>2023-11-14T07:55:38Z</lastmod>
  </url>
  <url>
    <loc>topics/care.html</loc>
    <lastmod>2023-11-14T07:55:38Z</lastmod>
  </url>
  <url>
    <loc>tasks/pruning.html</loc>
    <lastmod>2023-11-14T07:55:38Z</lastmod>
  </url>
  <url>
    <loc>tasks/gardenPreparation.html</loc>
    <lastmod>2023-11-14T07:55:38Z</lastmod>
  </url>
  <url>
    <loc>topics/index.html</loc>
    <lastmod>2023-11-14T07:55:38Z</lastmod>
  </url>
  <url>
    <loc>concepts/springFlowers.html</loc>
    <lastmod>2023-11-14T07:55:38Z</lastmod>
  </url>
  <url>
    <loc>topics/flowers/iris.html</loc>
    <lastmod>2023-11-14T07:55:38Z</lastmod>
  </url>
  <url>
    <loc>topics/flowers/snowdrop.html</loc>
    <lastmod>2023-11-14T07:55:38Z</lastmod>
  </url>
  <url>
    <loc>concepts/summerFlowers.html</loc>
    <lastmod>2023-11-14T07:55:38Z</lastmod>
  </url>
  <url>
    <loc>topics/flowers/gardenia.html</loc>
    <lastmod>2023-11-14T07:55:38Z</lastmod>
  </url>
</urlset>
```

Indexable resources



Faceted Search

Growing Flowers

INTRODUCTION CARE AND PREPARATION FLOWERS BY SEASON GLOSSARY COPYRIGHT

flower

Filters Reset 18 document(s) found for "flower" Page 1/2

Flowers by Season

- Spring 3
- Summer 3
- Autumn 3
- Winter 2

Flowers by Family

- Iridaceae 1
- Amaryllidaceae 1
- Rubiaceae 1
- Oleaceae 1
- Asteraceae 2
- Lamiaceae 1

- 1. Introduction**
[Introduction](#)
With just a little bit of care and preparation, any **flower** garden can be a vibrantly colored environment.
- 2. Care and Preparation**
[Care and Preparation](#)
When caring for your **flower** garden you want to feed your plants properly, control pests and weeds.
- 3. Sepal**
[Glossary](#) [Sepal](#)
Sepal A sepal (from Latin separatus "separate" + petalum "petal") is a part of the **flower** of flowering plants. Sepals in a "typical" **flower** are green and lie under the more conspicuous petals. As a collective unit the sepals are called the calyx ,...
- 4. Gerbera**
[Flowers by Season](#) [Winter Flowers](#) [Gerbera](#)
From Wikipedia, the free encyclopedia. Gerbera is a genus of ornamental plants from the sunflower family (Asteraceae). It was named in honor of the German naturalist Traugott Gerber. It has ...

01

Perform search

02

Apply filters to refine search results

03

Continue to apply filters until obtaining the desired result

Apply Facets to DITA topics

DITA Subject Scheme Map

Define facets categories and values



DITA Classification Map

Apply faceted values to DITA topics



WebHelp Responsive Search Results Page

Use facets to filter search results



Filters

Reset

Flowers by Season

Spring

Summer

Autumn

Winter

^

2

1

2

0

Flowers by Family

Iridaceae

Amaryllidaceae

Rubiaceae

Oleaceae

Asteraceae

Lamiaceae

^

1

1

0

1

1

1

Apply labels to DITA Topics

DITA Topic

```
3 <topic id="lilac">
4   <title>Lilac</title>
5   <prolog>
6   <metadata>
7     <keywords>
8       <keyword outputclass="label">Shrub</keyword>
9       <keyword outputclass="label">Oleaceae</keyword>
10      <keyword outputclass="label">Perennial Plant</keyword>
11    </keywords>
12  </metadata>
13 </prolog>
```

Associate label

WebHelp Topic Page

Flowers by Season ▾ Summer Flowers ▾ Lilac

Lilac

Shrub Oleaceae **Perennial Plant**

From Wikipedia, the free encyclopedia.

Lilac (Syringa) is a **genus** of about 20–25 species of flowering plants in the olive family (**Oleaceae**), native to Europe and Asia.

WebHelp Search Results Page

label:Perennial Plant

5 document(s) found for "label:Perennial Plant" Filters

1. **Lilac**

Flowers by Season ▾ Summer Flowers ▾ Lilac

From Wikipedia, the free encyclopedia. Lilac (*Syringa*) is a genus of about 20–25 species of flowering **plants** in the olive family (*Oleaceae*), native to Europe and Asia. They are deciduous shrubs or ...

Search by label

Advanced Search Queries

01	Boolean queries	Use Boolean operators, such as <i>AND</i> , <i>OR</i> , and <i>NOT</i> , to combine or exclude keywords	<code>garden AND preparation</code>
02	Phrase queries	Enclose search terms in quotation marks to find content that contains the exact phrase	<code>"formative prune"</code>
03	Wildcard queries	Use wildcard symbols, such as "*" or "?" to search for variations of a word	<code>me?t</code>
04	Regular Expression queries	Enclose patterns within forward slashes to find content that match the given pattern	<code>/(sub)?tropical/</code>
05	Field-specific queries	Specify which fields to search within a document (e.g.: title, description, labels)	<code>title:flowers</code>
06	Proximity queries	Search for keywords that are situated within a defined distance of each other	<code>"flower soil"~10</code>
07	Boost queries	Emphasize the importance of a specific term using the "A" symbol followed by a boost factor	<code>formative^10 prune</code>

Semantic Search



WebHelp Responsive Content Indexing and Search

Note: The content indexing functionality requires the indexed output to be generated using Oxygen WebHelp version 25 or higher.

Enable content indexing

Language

English

The language to be used by the search engine. Any change will trigger a re-indexing.

Enable semantic search

Note: The semantic search functionality requires an [OpenAI API Key](#) to be provided in the [Organization Page](#)

Cancel

Save

OpenAI Connection

Note: An OpenAI connection must be configured to enable the semantic search functionality.

OpenAI API Key *

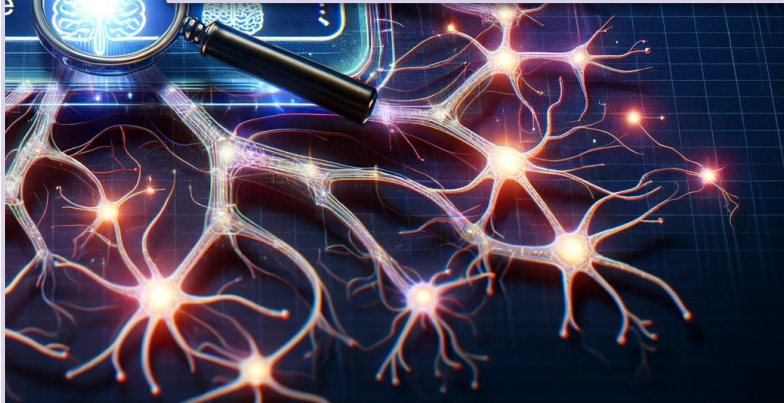
Oxygen Feedback uses the API Key to connect to OpenAI

OpenAI Organization

Optional, for users who belong to multiple organizations. Note that OpenAI usage will count against this organization's subscription quota

Cancel

Save



Try Oxygen Feedback Cloud

- Go to <https://feedback.oxygenxml.com>
- Create a new account
- Try it for 30 days

THANK YOU!

Alin Balasa

alin_balasa@oxygenxml.com